

THE MYSTERY OF HISTORY — FEBRUARY 4, 2019

# WHAT'S IT?

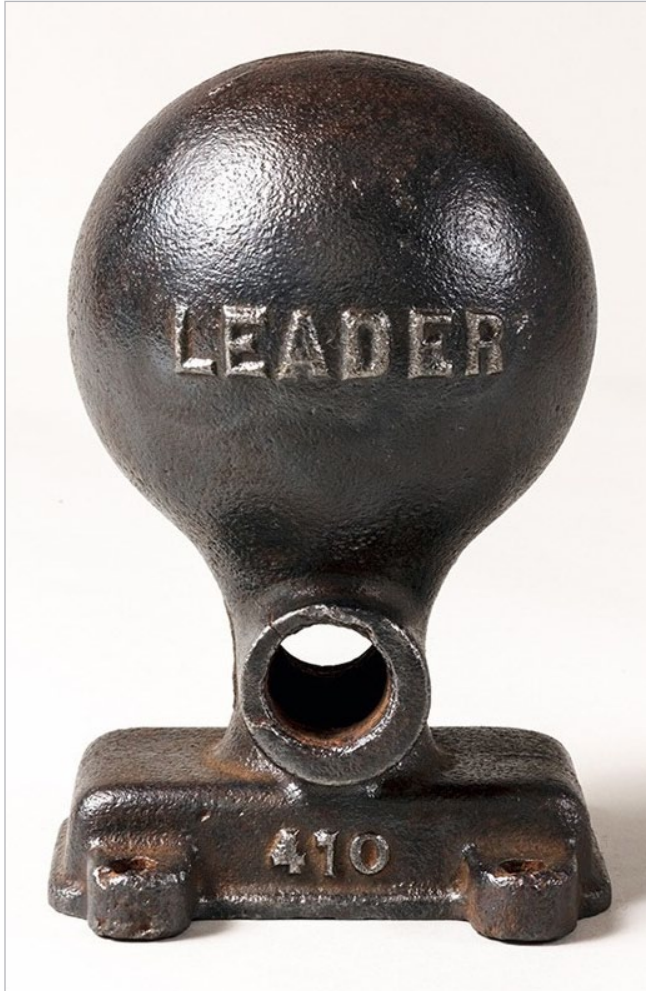


Fig. 1 (left): Front view. The back view is identical to this front view, except there is no embossing. The passageway above "410" goes through the casting to the back. Its openings are  $1\frac{3}{16}$ " in diameter and each end is internally threaded.

Fig. 2 (below): Bottom view. The hole in each of the four "ears" is  $\frac{3}{8}$ " in diameter and is not threaded. The hole in the center is also not threaded and freely connects to both the passageway and the globe seen in figure 1.



## ARTIFACT 19-01 CLUES:

This hollow iron casting weighs about seven pounds and is  $8\frac{1}{4}$ " high. Generally the walls of the casting are about  $\frac{3}{8}$ " thick including the globe at the top which has an outside circumference of  $16\frac{3}{4}$ ". The outside dimensions of the rectangular part of the base are  $5\frac{5}{8}$ " x  $3\frac{1}{2}$ "

PHOTOS: © 2018 Richard W. Black

THE MYSTERY OF HISTORY — FEBRUARY 4, 2019

# WHAT'S IT?

## HOW THIS WORKS:

Every so often an artifact will be on display in the Seymour Library near the information desk and also be posted simultaneously on the Museum website. Seeing the artifact in person at the Library is best because there it can be viewed from different angles and distances (touching the artifact is not allowed).

## YOUR GUESS?

Prediction cards can be found near the exhibit display at the Seymour Library and on this page. Fill either card out and return it to "Ye Olde Prediction Box" near the exhibit display.

## ELIGIBILITY

Open to everyone.

## DEADLINE

All entries must be received by: **Monday, March 18, 2019**

## ANSWERS

Answers will be available near the exhibit display at the Seymour Library and published on the museum website around **April 1, 2019** when the next artifact will go on display.


## PRIZES

There are NO prizes, but winning entrants names will be posted. (unless you indicate otherwise on the prediction card).

## PREDICTION CARD

THE MYSTERY OF HISTORY

# WHAT'S IT?



Name (please print): \_\_\_\_\_ Date: \_\_\_\_\_

Contact info (voluntary): \_\_\_\_\_


Phone Number: \_\_\_\_\_ Email: \_\_\_\_\_

Artifact Number: \_\_\_\_\_ What do you think this object might be, and how would it be used?


\_\_\_\_\_

\_\_\_\_\_

Continue on back of card, if necessary.




Scan the QR code for more details!



Brockport Community MUSEUM  
A MUSEUM WITHOUT WALLS

Visit us at <http://brockportcommunitymuseum.org>



A collaboration of the Brockport Community Museum, Seymour Library and the Brockport Central School District.

THE MYSTERY OF HISTORY — FEBRUARY 4, 2019

# WHAT'S IT?

## BACKGROUND

“WHAT’S IT?” has been a feature of the BCM website since its inception in 2007. In 2017 Brockport Community Museum board member Archer “Buck” Nobel, a Brockport Central School District teacher (now retired) developed “The Mystery of History” school project that encouraged fourth and fifth grade students to use observational and investigative techniques to help determine the type and use of different historic artifacts.

That project was introduced to the general public during a Brockport Community Museum outreach presence at the 2017 Brockport Sidewalk Sale. That success led to this collaboration between the Brockport Community Museum, Seymour Library and Brockport Central School District.

## GET INVOLVED

- **Take your best guess** regarding the current artifact.
- **Do you have an artifact** you would like to know more about? Open your query to a larger audience.
- **Have a suggestion** about how we can improve this project?

### If so...

Leave your contact information in “Ye old prediction box” near the exhibit display.

## CREDITS

### *Museum project committee*

Archer “Buck” Noble  
Richard W. Black  
Norman Frisch

### *Seymour Library*

Carl Gouveia, Director